

# For Only a Hundred Years (Duet)

(Chun Hyang Song: Act I, Scene 3)

Words and Music: Wm. H. Cleary

For on - ly a hun - dred years To want to be-long to you? Far

On-ly for a hun - dred years, On-ly till our life is through,

6

more than a hun - dred years Of time I could spend, time with - out end. For

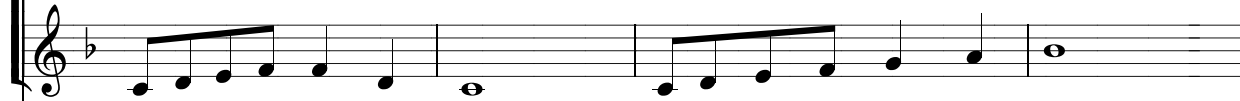
On - ly while the sky's a - bove you, I'll love you, love you.

# Only For a Hundred Years

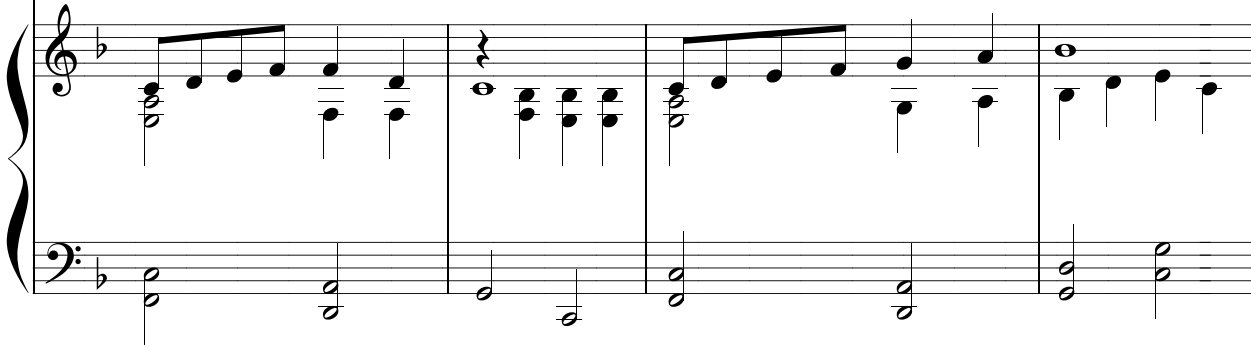
10



on - ly a hun - dred years? That's on - ly a touch of love, That's



On - ly for a hun - dred years, On - ly while the world goes on,



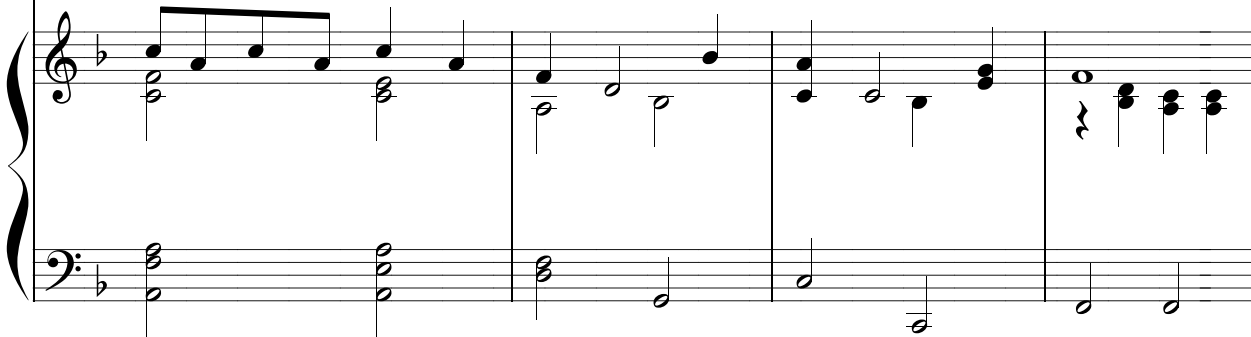
14



not ve - ry much of love for me.



On - ly while the stars sing of you, I'll love you, Chun Hyang.



# Only For a Hundred Years

18

On - ly while birds still sing? On - ly while su - gar's sweet?

On - ly while dawn's still come? On - ly while win - ter's

The musical score for measures 18-21 consists of three systems. The first system contains the vocal melody and lyrics for measures 18 and 19. The second system contains the vocal melody and lyrics for measures 20 and 21. The third system contains the piano accompaniment for all four measures, with a grand staff (treble and bass clefs) and a brace on the left.

22

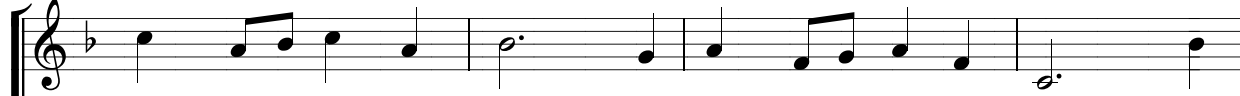
On - ly as long as flo - wers rise to greet the spring - time? For

cold. On ly as long as har vest fields turn gold.

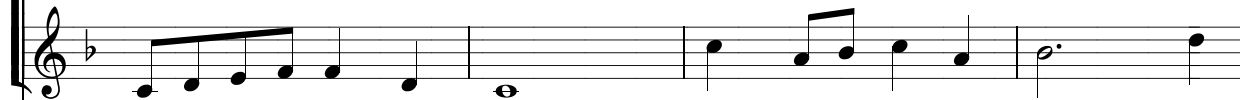
The musical score for measures 22-25 consists of three systems. The first system contains the vocal melody and lyrics for measures 22 and 23. The second system contains the vocal melody and lyrics for measures 24 and 25. The third system contains the piano accompaniment for all four measures, with a grand staff (treble and bass clefs) and a brace on the left.

# Only For a Hundred Years

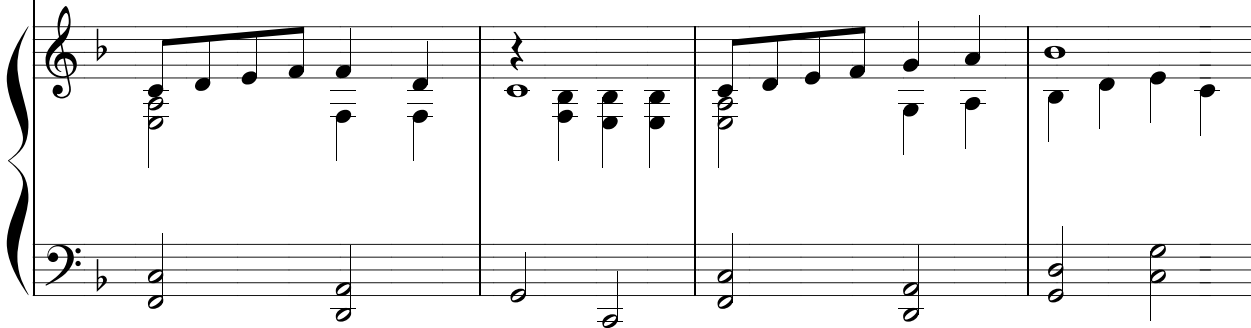
26



on - ly a hun - dred years? That's on - ly a touch of love, that's



On - ly for a hun - dred years, on - ly a touch of love. Yes,



30



not ve - ry much of love for me.



On - ly while the sky's a - bove you, I'll love you - Chun hyang.

